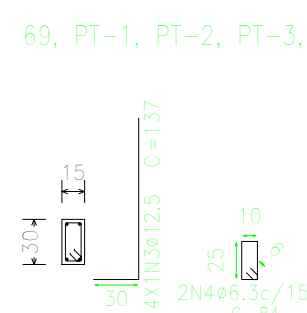
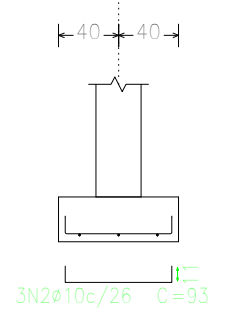
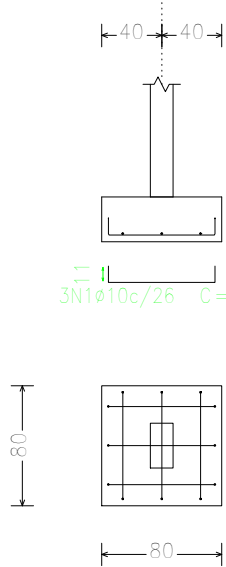


69, PT-1, PT-2, PT-3, PT-4, PT-11, PT-17, PT-24, PT-28, PT-29, PT-30, PT-31, PT-33, PT-36, PT-38, PT-39 e PT-40

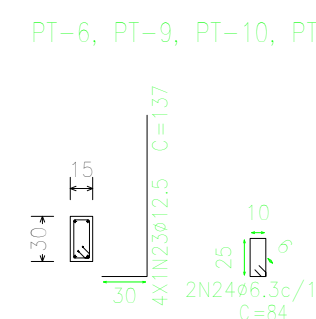
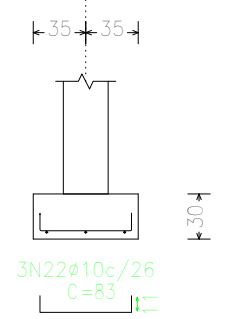
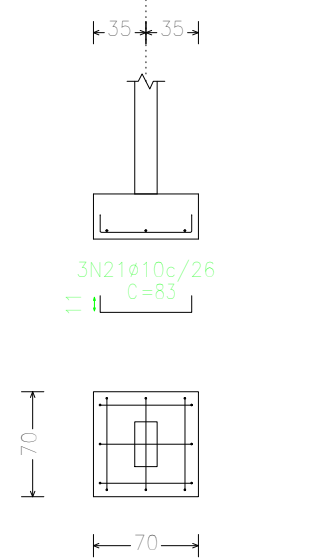
PT-1, PT-2, PT-3, PT-4, PT-11, PT-17, PT-24, PT-28, PT-29, PT-30, PT-31, PT-33, PT-36, PT-38, PT-39 e PT-40



69, PT-1, PT-2, PT-3, PT-4, PT-11, PT-17, PT-24, PT-28, PT-29, PT-30, PT-31, PT-33, PT-36, PT-38, PT-39 e PT-40

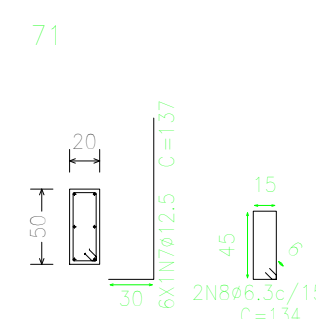
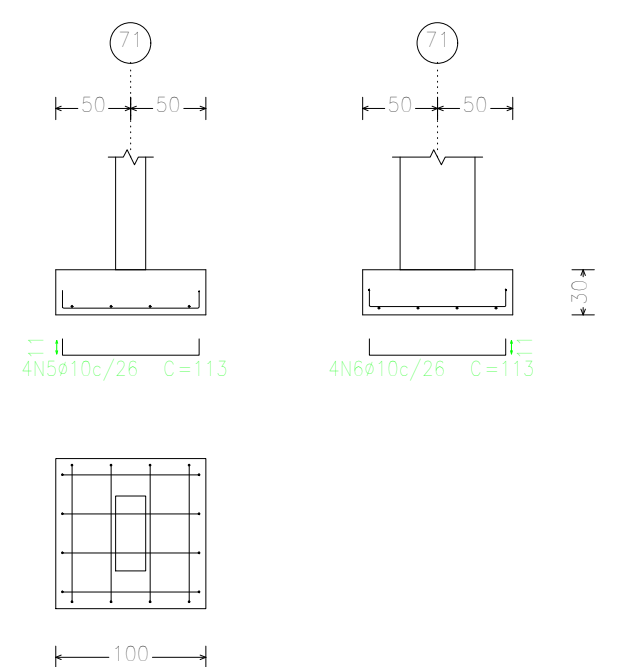
PT-6, PT-9, PT-10, PT-12, PT-13, PT-16, PT-18, PT-26, PT-27, PT-34 e PT-35

PT-6, PT-9, PT-10, PT-12, PT-13, PT-16, PT-18, PT-26, PT-27, PT-34 e PT-35

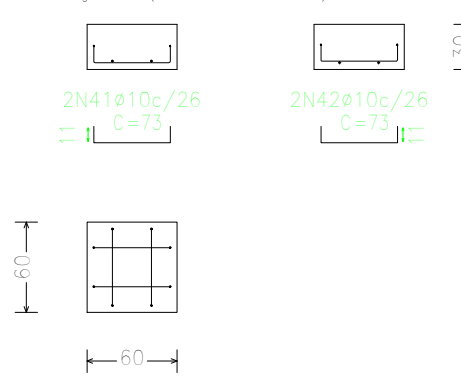


PT-6, PT-9, PT-10, PT-12, PT-13, PT-16, PT-18, PT-26, PT-27, PT-34 e PT-35

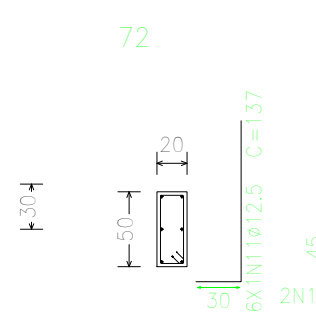
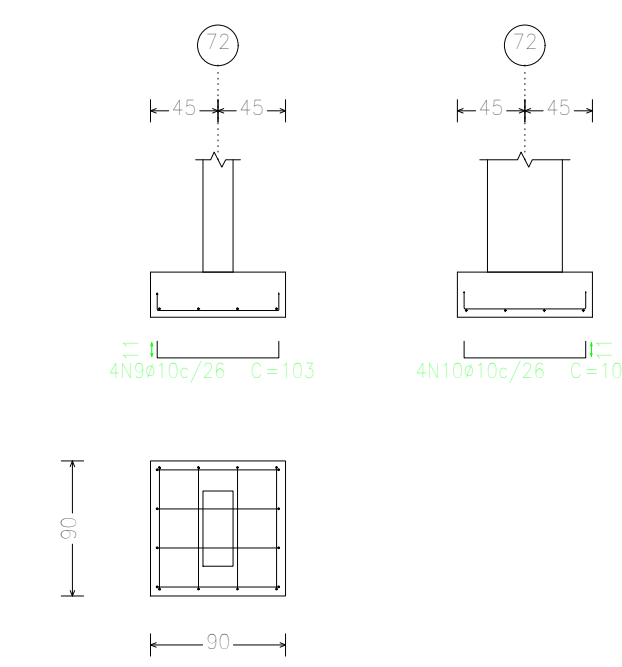
71



Posição: (44,54, 26,56)

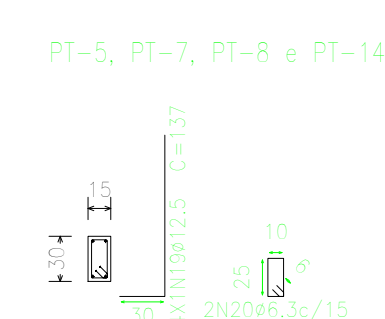
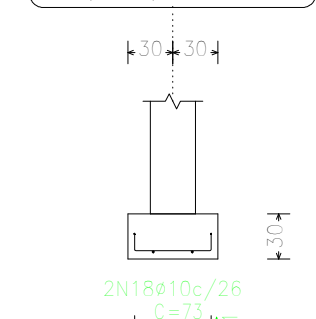
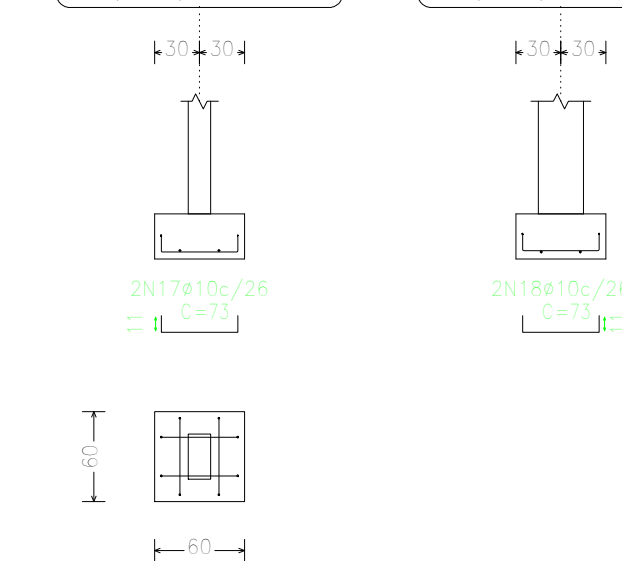


72



PT-5, PT-7, PT-8 e PT-14

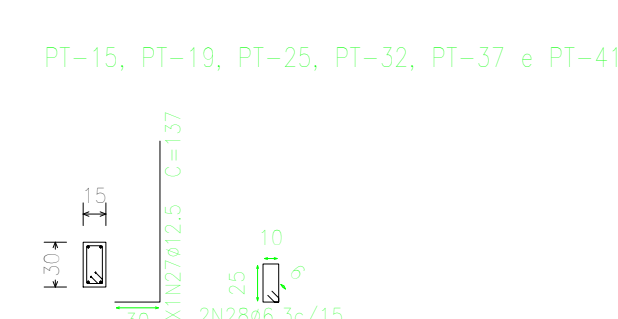
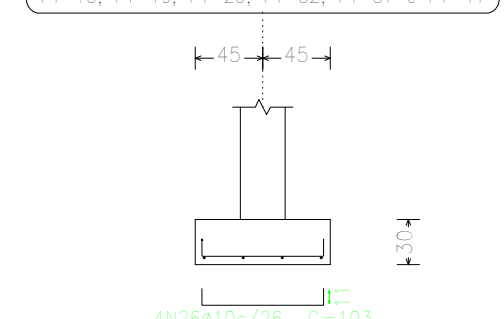
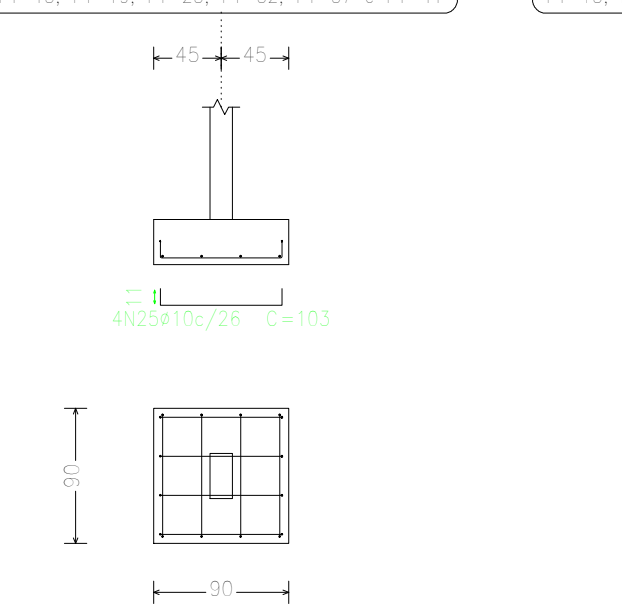
PT-5, PT-7, PT-8 e PT-14



PT-5, PT-7, PT-8 e PT-14

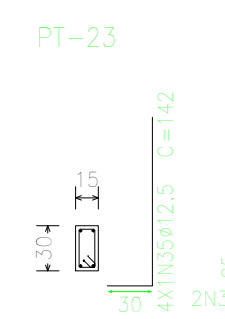
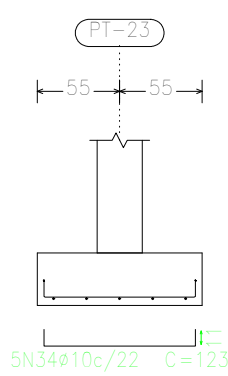
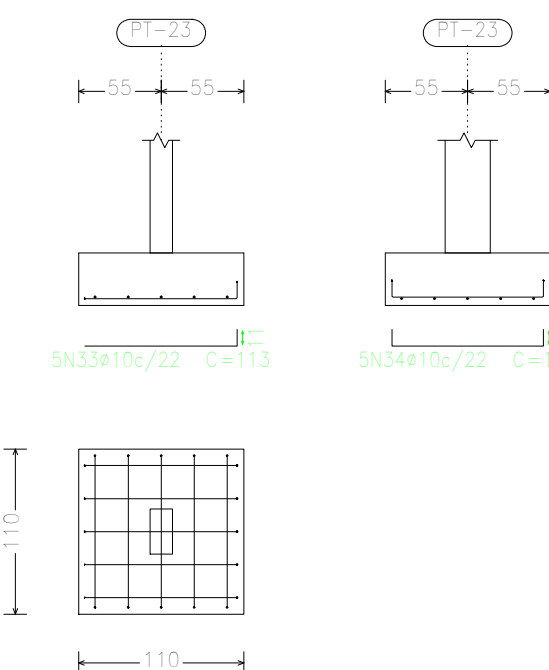
PT-15, PT-19, PT-25, PT-32, PT-37 e PT-41

PT-15, PT-19, PT-25, PT-32, PT-37 e PT-41



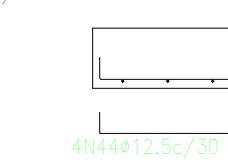
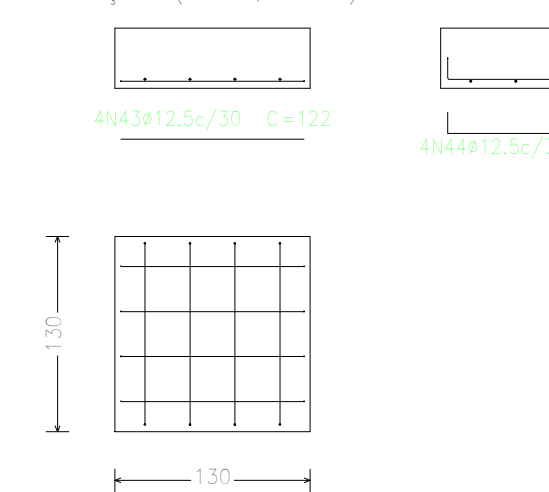
PT-15, PT-19, PT-25, PT-32, PT-37 e PT-41

PT-23



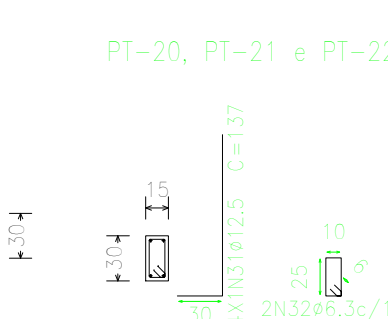
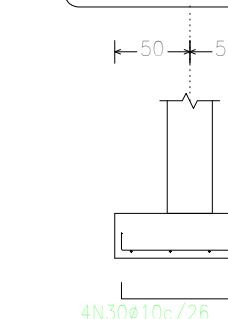
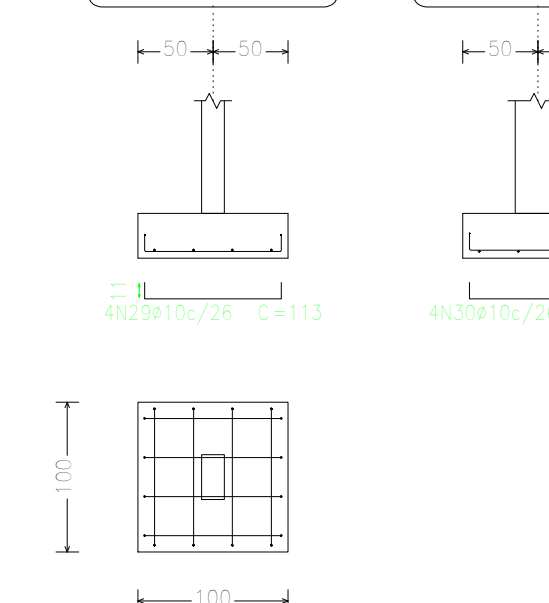
PT-23

Posição: (44,54, 31,90)



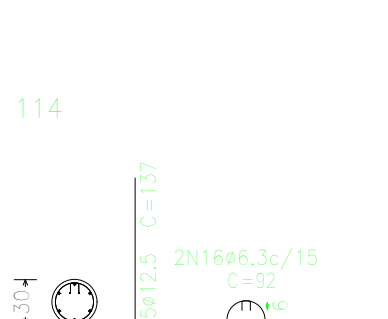
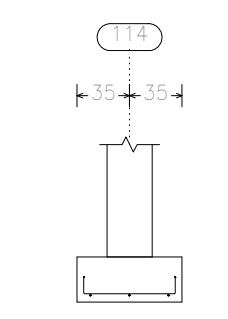
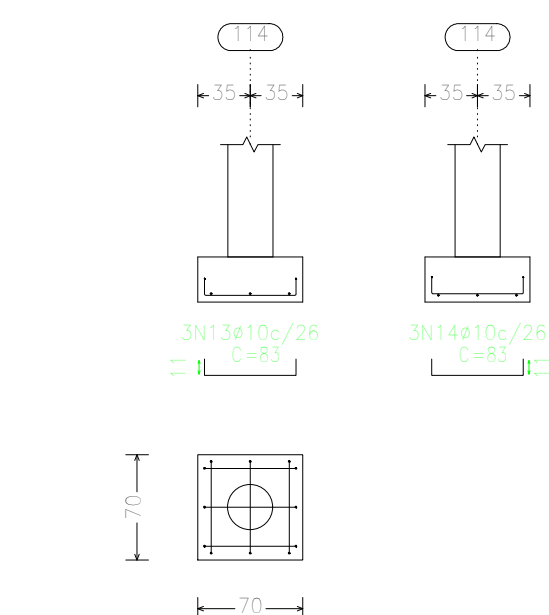
PT-20, PT-21 e PT-22

PT-20, PT-21 e PT-22



PT-20, PT-21 e PT-22

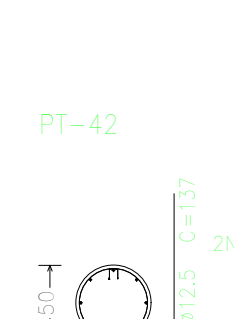
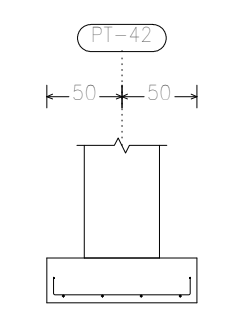
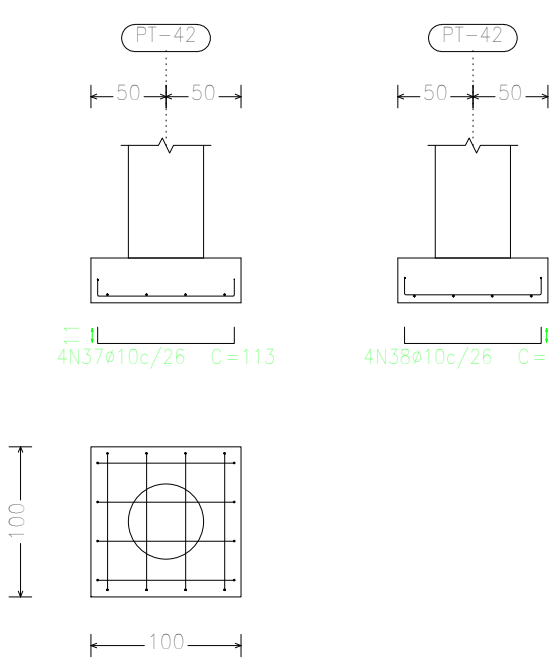
114



114

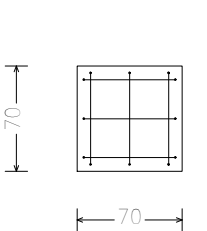
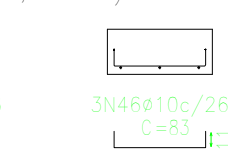
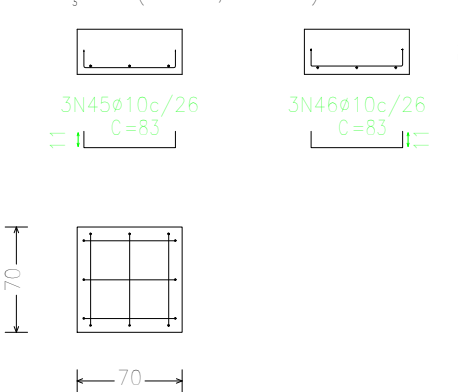
Resumo Aço Fundação	Comp. total (m)	Peso+10% (kg)	Total
CA-50	80,9	22	
Ø10	288,9	196	
Ø12,5	276,8	293	511

PT-42



PT-42

Posição: (47,27, 32,08)



Elemento	Pos.	Diam.	Ø	Rob.	Reforço	Rob.	Comp.	Total	CA-50	CA-60
69PT-1+PT-2+PT-3	1	Ø10	3	11						
PT-4+PT-11+PT-17	2	Ø10	3	11	11					
PT-24+PT-28+PT-29	3	Ø12,5	4	30	107					
PT-32+PT-33+PT-33	4	Ø8,3	2		84					
PT-36+PT-38+PT-39										
PT-40										
Total+10%										
71	5	Ø10	4	11	Ø1	11	113	422	2,8	
	6	Ø10	4	11	Ø1	11	113	422	2,8	
	7	Ø12,5	4	30	107		137	548	5,3	
	8	Ø8,3	2		84		84	168	0,4	
Total+10%										
72	9	Ø10	4	11	Ø1	11	103	412	2,5	
	10	Ø10	4	11	Ø1	11	103	412	2,5	
	11	Ø12,5	4	30	107		137	548	5,3	
	12	Ø8,3	2		84		84	168	0,4	
Total+10%										
114	13	Ø10	3	11	Ø1	11	83	249	1,5	
	14	Ø10	3	11	Ø1	11	83	249	1,5	
	15	Ø12,5	4	30	107		137	548	5,3	
	16	Ø8,3	2		84		84	168	0,4	
Total+10%										
PT-14	17	Ø10	2	11	Ø1	11	73	146	0,3	
	18	Ø10	2	11	Ø1	11	73	146	0,3	
	19	Ø12,5	4	30	107		137	548	5,3	
	20	Ø8,3	2		84		84	168	0,4	
Total+10%										
PT-6+PT-9+PT-10	21	Ø10	3	11	Ø1	11	83	249	1,5	
PT-12+PT-13+PT-16	22	Ø10	3	11	Ø1	11	83	249	1,5	
PT-18+PT-26+PT-27	23	Ø12,5	4	30	107		137	548	5,3	
PT-34+PT-35	24	Ø8,3	2		84		84	168	0,4	
Total+10%										
PT-19+PT-19+PT-25	25	Ø10	4	11	Ø1	11	103	412	2,5	
PT-32+PT-33+PT-41	26	Ø10	4	11	Ø1	11	103	412	2,5	
	27	Ø12,5	4	30	107		137	548	5,3	
	28	Ø8,3	2		84		84	168	0,4	
Total+10%										
PT-20+PT-21+PT-22	29	Ø10	4	11	Ø1	11	113	422	2,8	
	30	Ø10	4	11	Ø1	11	113	422	2,8	
	31	Ø12,5	4	30	107		137	548	5,3	
	32	Ø8,3	2		84		84	168	0,4	
Total+10%										
PT-23	33	Ø10	5		102	11	113	595	3,5	
	34	Ø10	5	11	101	11	123	615	3,8	
	35	Ø12,5	4	30	112		142	565	5,5	
	36	Ø8,3	2		84		84	168	0,4	
Total+10%										
PT-42	37	Ø10	4	11	Ø1	11	113	422	2,8	
	38	Ø10	4	11	Ø1	11	113	422	2,8	
	39	Ø12,5	4	30	107		137	548	5,3	
	40	Ø8,3	2		155		155	310	0,8	
Total+10%										
Posição: (44,54, 26,56)	41	Ø10	2	11	Ø1	11	73	146	0,3	
	42	Ø10	2	11	Ø1	11	73	146	0,3	
Total+10%										
Posição: (44,54, 31,90)	43	Ø12,5	4		122		122	488	4,7	
	44	Ø12,5	4	14	121	14	149	596	5,7	
Total+10%										
Posição: (47,27, 32,08)	45	Ø10	3	11	Ø1	11	83	249	1,5	
	46	Ø10	3	11	Ø1	11	83	249	1,5	
Total+10%										
Ø10										0,0
Ø12,5										0,0
Total										0,0



PROJETO ESTRUTURAL DA ESCOLA PADRÃO - MUNICÍPIO DE ARAPIRACA/AL.

LOCAL

Nº	REVISÕES	DATA	APROVAÇÃO
AR00	Primeira entrega	05/07/2021	PREFEITO

APROVAÇÕES/OBSERVAÇÕES

Proposta: \_\_\_\_\_ Proprietário: \_\_\_\_\_  
PREFEITURA DE ARAPIRACA

ESTRUTURAL

ASSUNTO: DET. DAS SAPATAS- PARTE DO FRENTE	FOLHA: 04
ENGENHEIRO:	ÁREAS: ÁREA DO TERRENO ..... m² ÁREA CONSTRUÍDA ..... 2.959,54 m² ÁREA DE COBERTA ..... 2.262,68 m² TOTAL DE PRANCHAS 09
	COLABORAÇÃO: ART: .
CODIGO:	DATA: JULHO - 2021 ESCALA: INDICADA